

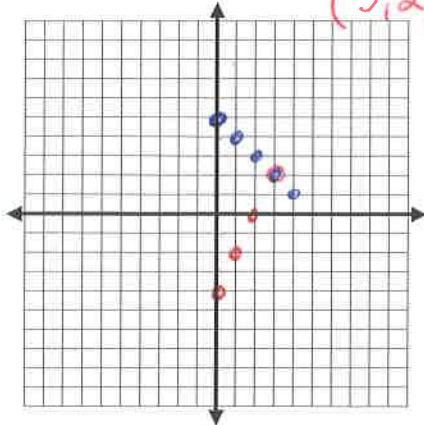
Algebra 1

NAME KEY

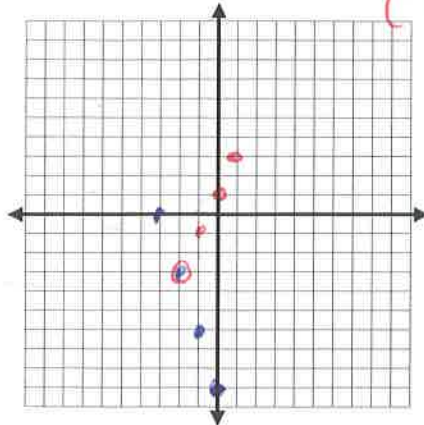
Practice Quiz 6.1-6.3,6.8

Solve each system of equations by Graphing. (3 Points)

1. $-2x + y = -4$ $y = 2x - 4$
 $x + y = 5$ $y = -x + 5$
(3, 2)



2. $-2x + y = 1$ $y = 2x + 1$
 $3x + y = -9$ $y = -3x - 9$
(-2, 3)

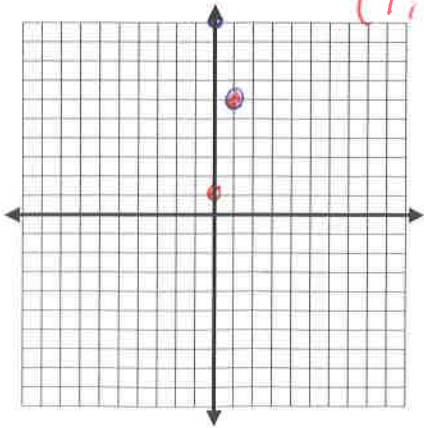


1. _____

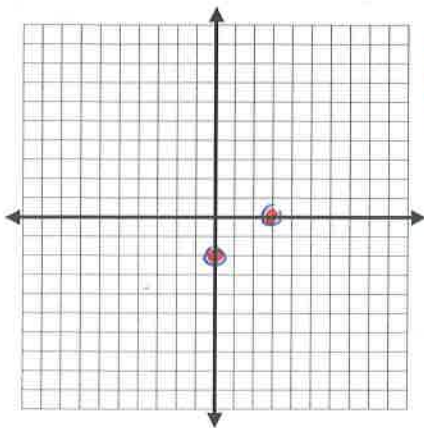
2. _____

3. _____

3. $-10x + 2y = 2$ $2y = 10x + 2$ $y = 5x + 1$
 $4x + y = 10$ $y = -4x + 10$
(1, 6)



4. $4x - 6y = 12$ $-6y = -4x + 12$ $y = \frac{2}{3}x - 2$
 $-2x + 3y = -6$ $3y = 2x - 6$ $y = \frac{2}{3}x - 2$



\mathbb{R}

4. _____

5. _____

6. _____

Solve each system of equations by SUBSTITUTION. (3 Points)

Points (18) _____

5. $-x + y = 4$ $y = x$
 $3x + 2y = 18$

$-x + y = 4$
 $y = x + 4$
 $3x + 2(x + 4) = 18$
 $3x + 2x + 8 = 18$
 $5x = 10$
 $x = 2$
 $y = 2 + 4$
 $y = 6$
(2, 6)

6. $2x + y = 3$
 $2x + 4y = 24$

$2x + y = 3$
 $y = -2x + 3$
 $2x + 4(-2x + 3) = 24$
 $2x - 8x + 12 = 24$
 $-6x = 12$
 $x = -2$
 $y = -2(-2) + 3$
 $y = 7$
(-2, 7)

Solve each system of equations by ELIMINATION. (3 Points)

$$\begin{array}{r} 7. \quad 3x + 2y = 12 \\ + \quad -3x + 3y = 3 \\ \hline \end{array}$$

$5y = 15$
 $y = 3$ (23)
 $3x + 6 = 12$
 $3x = 6$
 $x = 2$

$$\begin{array}{r} 8. \quad 2x + 4y = 18 \\ - \quad 5x + 4y = 21 \\ \hline \end{array}$$

$-3x = -3$
 $x = 1$ (1, 4)
 $2 + 4y = 18$
 $4y = 16$
 $y = 4$

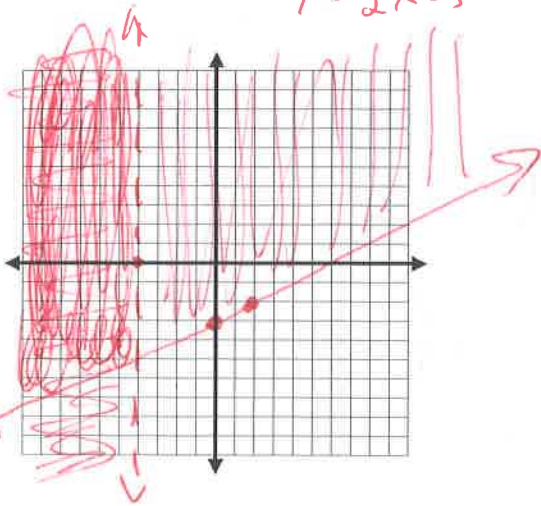
7. _____

8. _____

Solve each system of inequalities by graphing. (5 Points)

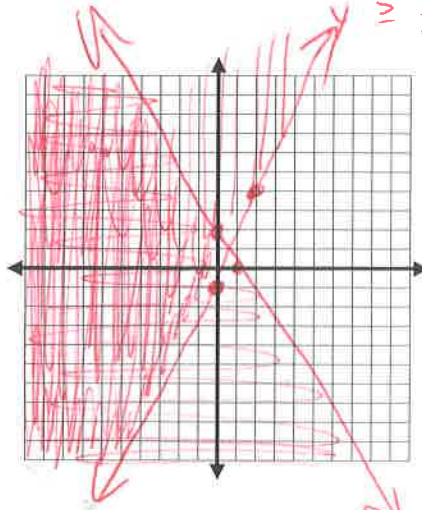
9. $x < 4$
 $2y - x \geq -6$

$2y \geq x - 6$
 $y \geq \frac{1}{2}x - 3$



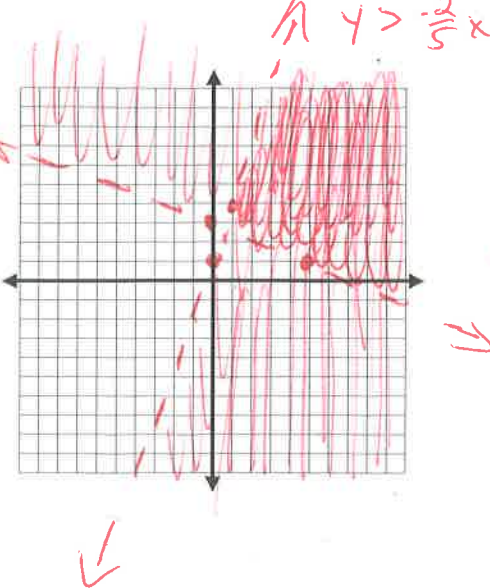
10. $2x + y \leq 2$
 $-5x + 2y \geq -2$

$y \leq -2x + 2$
 $2y \geq 5x - 2$
 $y \geq \frac{5}{2}x - 1$



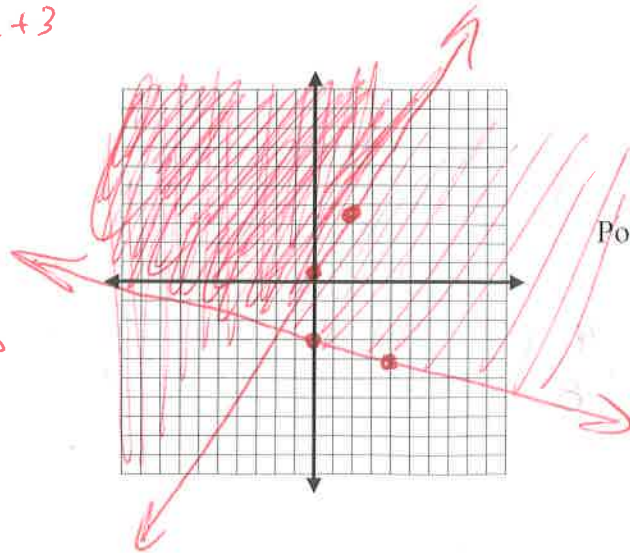
11. $y - 3x < 1$
 $2x + 5y > 15$

$y < 3x + 1$
 $5y > -2x + 15$
 $y > -\frac{2}{5}x + 3$



12. $3x - 2y \leq -1$
 $x + 4y \geq -12$

$-2y \leq -3x - 1$
 $4y \geq -x - 12$
 $y \geq \frac{3}{2}x + \frac{1}{2}$
 $y \geq -\frac{1}{4}x - 3$



Points (26) _____